



Heizohack®

Woodchippers



HM 4/6-300 Pages 2 / 3

HM 6-300 VM Pages 4 / 5

HM 5/6/8-400 Pages 6 / 7

HM 4/6-300 EM & 5/6/8-400 EM Pages 8 / 9

HM 8/10-500 K & HM 14-800 K Pages 10 / 11

HM 10-500 KT & 14-800 KT Pages 12 / 13

HM 14-800 KL Pages 14 / 15

Heizomat®

Energy in balance with nature

Trunk diameter
up to 30 cm

HM 4-300
HM 6-300



The HEIZOHACK feed control HE 002 controls the feed motion of the wood to be made into chips irrespective of the drive performance. The integrated operating hours counter stores the daily and total numbers of hours. Auto reverse is available for the stress control to clear the drum.

All manually loaded wood chipping machines with a chassis are products, which meet the requirements of the Equipment and Product Safety Act and bear the „**Tested Safety**“ mark. All these machines have only been authorised for manual loading and are equipped with a safety cable which runs round the in-feed table.



High performance
manually loaded mobile
wood chipper!



Wood Chippers



	HM 4-300	HM 6-300
Feed Height:	300 mm	
Feed Width:	330 mm	500 mm
Transport Height:	2422 mm	
Transport Width:	2265 mm	
Working Height:	850 mm	
Working Width:	2965 mm	
Ejection Height:	3419 mm	
Support Load:	490 kg	620 kg
Total Length:	3213 mm	3382 mm
Weight:	about 1850 kg	about 2250 kg
Flywheel mass:	130 kg	
Feed in:	Conveyor belt 600 mm long In-feed table 900 mm long Pressure roller with steel teeth Ø 380 mm	
Sieve:	Standard mesh 35 / 40 mm	
Chip Drum Ø:	450 mm with quick change blades	
Drive:	Power take-off shaft, max. 750 rpm	
Flywheel Ø:	1120 mm, 60 mm thick	
Ejection:	Manually foldable and rotatable, supported by pneumatic shock damper	
Controls:	automatic load-dependent RPM control of the feed with two daily hours counters and an overall operating hours counter; belt and roller speeds infinitely adjustable	
Chassis:	Chassis 25 km/h unbraked and trailing axle	
	Chassis 25 km/h with cable brake and trailing axle	
	Tyres 10/75-15.3	
Dimensions and weights incl. chassis		



The manually fed wood chippers for mobile and flexible operation on the spot. The chipper is transported on a trailing axle or the three point hitch of the tractor.

With the HEIZOHACK wood chipping machines, wood waste, such as slats, beams, logs, blocks and branches and whole tree trunks with a diameter of up to 30 cm (300 series) and up to 40 cm (400 series) can be shredded with little energy required. A steel conveyor belt and a pressure roller with welded tongs ensure powerful and reliable feeding of the chipping material.



Trunk diameter
up to 30 cm

HM 6-300 VM



With a feed height of up to 30 cm, cut wood and tree trunks can be worked on on the spot to high quality wood chips.

Mobile wood chippers for
manual feeding for flexible
operations on the spot!



The chipper mounted on a high speed trailer chassis makes it possible to get to the site quickly.

The ability to rotate the chipper in the direction of the wood to be chipped using the heavy duty ball bearing ring between the chipper and the chassis.



Wood Chippers



HM 6-300 VM	
Feed Height:	300 mm
Feed Width:	500 mm
Transport Height:	2782 mm
Transport Width:	2110 mm
Working Height:	960 mm
Ejection Height:	3681 mm
Support Load:	100 kg
Total Length:	4520 mm
Weight:	about 3500 kg
Flywheel mass:	130 kg
Feed in:	Conveyor belt 600 mm long In-feed table 900 mm long Pressure roller with steel teeth Ø 380 mm
Sieve:	Standard mesh 35 / 40 mm
Chipping Drum Ø:	450 mm with quick change blades
Flywheel Ø:	1120 mm, 60 mm thick
Ejection:	Manually foldable and rotatable, pneumatic shock damper supports Ejection flap adjustment and electric tower rotation (infinite)
Controls:	automatic load-dependent RPM control of the feed with two daily and an overall operating hours counters; belt and roller speeds infinitely adjustable
Drive:	Air-cooled four stroke diesel engine with direct injection Type Hatz 4L41C, 51 kW / 70 HP, max. 3000 rpm
Chassis:	ALKO tandem chassis 80 km/h, inertia braked Traction shaft adjustable for height, tyres 225/70 R 14
Dimensions and weights incl. chassis	



The HM 6-300 reliably draws in logs with a diameter of up to 30 cm via a hydraulically driven feed with conveyor belt and pressure roller. The outstanding performance and the tandem chassis, on which up to 80 km/h can be driven, speaks for this series.

The machine is for manual feeding only and equipped with a safety cable.

Trunk diameter
up to 40 cm

HM 5-400
HM 6-400
HM 8-400



Sturdy mobile wood chipper
for manual feeding!



Wood Chippers



	HM 5-400	HM 6-400	HM 8-400
Feed Height:	400 mm		
Feed Width:	420 mm	500 mm	670 mm
Transport Height:	2588 mm		
Transport Width:	2265 mm		
Ejection Height:	3502 mm		
Working Height:	790 mm		
Working Width:	3105 mm		
Support Load:	820 kg	910 kg	970 kg
Total Length:	3343 mm	3427 mm	3596 mm
Weight:	about 2950 kg	about 3150 kg	about 3300 kg
Flywheel mass:	300 kg	300 kg	470 kg
Feed in:	Conveyor belt 600 mm long In-feed table 900 mm long Pressure roller with steel teeth Ø 450 mm		
Sieve:	Standard mesh 35 / 40 mm		
Chipping Drum Ø:	495 mm with quick change blades		
Drive:	Power take-off shaft, max. 750 rpm		
Flywheel Ø:	1370 mm, 60 / 90 mm dick		
Ejection:	Manually foldable and rotatable, supported by pneumatic shock damper automatic load-dependent RPM control of the feed with two daily and an overall operating hours counters; belt and roller speeds infinitely adjustable		
Controls:	Chassis 25 km/h unbraked and trailing axle		
Chassis:	Chassis 25 km/h with cable brake and trailing axle		
	Tyres 400/60 - 15.5		
	Chassis 40 km/h with spring loaded air brake 3,5 t and trailing axle		

Dimensions and weights incl. chassis



A large impeller blower with integrated flywheel ensures good ejection of the chips and a powerful and even throughput of the chip drum.



By means of interchangeable sieves, available in different mesh sizes, uniform wood chips are generated.



In order to ensure safe operations for manual feeding, these machines are equipped with a stable control lever above the feed table.

Linked to a steel cable round the front edge of the feed table, the feed into the machine can be stopped with safety.

Trunk diameter
up to 40 cm

HM 4-300 EM
HM 6-300 EM
HM 5-400 EM
HM 6-400 EM
HM 8-400 EM



	HM 4-300 EM	HM 6-300 EM
Feed Height:	300 mm	
Feed Width:	330 mm	500 mm
Transport Height:	2422 mm	
Transport Width:	2265 mm	
Ejection Height:	3310 mm	
Working Width:	2965 mm	
Total Length:	3700 mm	
Weight (without electromotor)	2100 kg	2320 kg
Flywheel mass:	130 kg	
Feed in:	Conveyor belt 600 mm long In-feed table 900 mm long Pressure roller with steel teeth Ø 380 mm	
Sieve:	Standard mesh 35 / 40 mm	
Chipping Drum Ø:	450 mm with quick change blades	
RPM:	max. 750 rpm	
Auxiliary Engines:	Electromotor 45 kW / 1500 rpm V-belt drive, control cabinet with star-delta switching Weight with frame 625 kg	
	Electromotor 55 kW / 1500 rpm V-belt drive, control cabinet with star-delta switching Weight with frame 680 kg	
	Electromotor 75 kW / 1500 rpm V-belt drive, control cabinet with star-delta switching Weight with frame 810 kg	
Flywheel Ø:	1120 mm, 60 mm thick	
Ejection:	Manually foldable and rotatable; supported by pneumatic shock damper	
Controls:	Automatically load-dependent feed regulation; Two daily counters and one overall operating hours counter; Belt speed infinitely adjustable; Control cabinet with star-delta switching; connection on site in accordance with DIN-VDE*	
*German Commission for Electrical, Electronic and Information Technologies		

Efficient wood chipper
with electromotor for
stationary use!

Wood Chippers



	HM 5-400 EM	HM 6-400 EM	HM 8-400 EM
Feed Height:	400 mm		
Feed Width:	420 mm	500 mm	670 mm
Transport Height:	2422 mm		
Transport Width:	2265 mm		
Ejection Height:	3310 mm		
Working Width:	2965 mm		
Total Length:	3700 mm		
Weight (without electromotor)	2950 kg	3170 kg	3550 kg
Flywheel mass:	300 kg	300 kg	470 kg
Feed in:	Conveyor belt 600 mm long In-feed table 900 mm long Pressure roller with steel teeth Ø 380 mm		
Sieve:	Standard mesh 35 / 40 mm		
Chipping Drum Ø:	495 mm with quick change blades		
RPM:	max. 750 rpm		
Auxiliary Engines:	Electromotor 45 kW / 1500 rpm V-belt drive, control cabinet with star-delta switching Weight with frame 625 kg		
	Electromotor 55 kW / 1500 rpm V-belt drive, control cabinet with star-delta switching Weight with frame 680 kg		
	Electromotor 75 kW / 1500 rpm V-belt drive, control cabinet with star-delta switching Weight with frame 810 kg		
Flywheel Ø:	1370 mm, 60 / 90 mm thick		
Ejection:	Manually foldable and rotatable; supported by pneumatic shock damper		
Controls:	Automatically load-dependent feed regulation; Two daily counters and one overall operating hours counter; Belt speed infinitely adjustable; Control cabinet with star-delta switching; connection on site in accordance with DIN-VDE*		
*German Commission for Electrical, Electronic and Information Technologies			



Trunk diameter
up to 50 cm

End pieces:
HM 8-500 up to 70 cm
HM 10-500 up to 80 cm
HM 14-800 up to 80 cm

HM 8-500 K
HM 10-500 K
HM 14-800 K



By means of the standard adapter fitting for quick change blades, the blades can be exchanged in a very short period of time.

For private contractors and for the professional generation of wood chips, the K series fulfils all wishes.

A variety of additional options for the machine configuration are available for applications in daily use.

The feed speed can be infinitely adjusted for all machines by means of a distributor fitted in the hydraulic control unit.

The upstream hydraulically driven table feed roller helps to draw longer logs into the feed.

**Powerful entry-level model
for wood chip producers!**



Wood Chippers



	HM 8-500 K	HM 10-500 K	HM 14-800 K
Feed Height:	800 mm		
Feed Width:	708 mm	877 mm	1215 mm
Transport Height:	2900 mm		
Transport Width:	1)2700 mm / 2)2624 mm		
Working Height:	1200 mm		
Working Width:	4140 mm		
Ejection Height:	4410 mm	4980 mm	
Support Load:	2000 kg	2100 kg	2420 kg
Total Length:	4610 mm	4780 mm	5120 mm
Weight:	ca. 6900 kg	ca. 7400 kg	ca. 8320 kg
Flywheel mass:	1000 kg		
Feed in:	Conveyor belt 900 mm long Feed table 1500 mm long Pressure roller with steel teeth Ø 800 mm		
In-feed table:	Hydraulically foldable; including front end roller; optionally with conveyor belt		
Sieve:	Standard mesh 45 / 60 mm with stop bars		
Chipping drum Ø:	495 mm with quick change blades		
Drive:	Via universal shaft and V-belt transmission		
RPM:	max. 1000 rpm		
Flywheel Ø:	1370 mm, 150 mm thick		
Ejection:	Hydraulically foldable; height adjustable and rotatable (ejection height 3.35 m up to 4.25 m or 4.79 m with an HM14-800 K, Depending on chassis and tyres); hydraulic ejection flap adjustment		
Controls:	Automatic load-dependent feed control; Rotation direction and speed of the conveyor belt and pressure roller infinitely variable, irrespective of one another and reversible; two day and one overall operating hours counters; Remote control with control panel for all functions		
Cassis:	Chassis 25 km/h or 40 km/h trailing axle and spring-loaded air brake 1)Tyres 500/45 R22.5 2)Tyres 400/55 R22.5 2)Tyres 385/55 R22.5		
Dimensions and weights incl. chassis			



Via a 10 groove V-belt reduction gearing, transmission is generated which enables varying shaft rpm's to be transmitted powerfully.



The powerful professional machines are equipped as standard with remote controlled functions, such as turret rotation, raising and lowering, infinitely variable feed control via servo-hydraulics, electronic rpm and machine controls.

The hydraulic block is fitted segment style in a clear and robust steel housing. Each valve is electrically activated and can, in addition, be operated by a hand lever (emergency operation).

The hydraulic oil is cooled by an oil cooler with an electrically driven fan.



Trunk diameter
up to 50 cm

End pieces:
HM 10-500 up to 80 cm
HM 14-800 up to 80 cm

HM 10-500 KT
HM 14-800 KT



The professional wood
chipper for economic
wood chipping production!



Optionally we deliver the T60 remote control for the functions rotate, raise and lower the ejection turret and raise and lower the feed flap for all crane-loaded wood chippers.



Wood Chippers



	HM 10-500 KTL	HM 14-800 KTL
Feed Height:	800 mm	
Feed Width:	877 mm	1215 mm
Transport Height:	3650 mm	
Transport Width:	1)2980 mm / 2)2700 mm	
Working Height:	1620 mm	
Working Width:	4300 mm	
Ejection Height:	5800 mm	
Support Load:	1400 kg	1500 kg
Total Length:	5800 mm	
Weight:	about 11500 kg	about 12500 kg
Flywheel mass:	1000 kg	
Feed in:	Conveyor belt 900 mm long Feed table 1500 mm long Pressure roller with steel teeth Ø 800 mm	
In-feed table:	Hydraulically foldable; including front end roller; optionally with conveyor belt	
Sieve:	Standard mesh 45 / 60 mm with stop bars	
Chipping Drum Ø:	495 mm with quick change blades	
Drive:	Via universal shaft and V-belt transmission	
RPM:	max. permissible 1000 rpm	
Flywheel Ø:	1370 mm, 150 mm thick	
Ejection:	Hydraulically foldable, height adjustable and rotatable (ejection height 3.35 m up to 5.14 m or 4.79 m, depending on chas- sis and tyres); hydraulic ejection flap adjustment	
Controls:	Automatic load-dependent feed control; Rotation direction and speed of the conveyor belt and pressure roller infinitely variable, irrespective of one another and reversible; two day and one overall operating hours counters; Remote control with control panel for all functions	
Chassis:	Tandem chassis 40/60 km/h (without ABS) or 80 km/h (with ABS) and dual air brake system 1)Tyres 560/45 R22.5 2)Tyres 385/55 R22.5 2)Tyres 400/55 R22.5	
Dimensions and weights incl. chassis		



Trunk diameter
up to 50 cm

End pieces:
HM 14-800 up to 80 cm

HM 14-800 KL



Set up on an up to 440 horsepower, four-wheel drive Mercedes Actros, our most powerful wood chipper is quickly on the spot.

The drive is provided by the truck engine (auxiliary drive).

Efficient and economic chipping of high-quality chip material is guaranteed in comfort and style.



Wood Chippers



HM 14-800 KL	
Feed Height:	800 mm
Feed Width:	1215 mm
Transport Height:	3950 mm
Transport Width:	2530 mm
Working Height:	1800 mm
Working Width:	3800 mm (without crane)
Ejection Height:	5440 mm
Total Length:	7800 mm
Weight:	about 23500 kg
Flywheel mass:	1000 kg
Feed in:	Conveyor belt 900 mm long Feed in table 1500 mm long Pressure roller with steel teeth Ø 800 mm
In-feed table:	Hydraulically foldable; including front end roller; optionally with conveyor belt
Sieve:	Standard mesh 45 / 60 mm with stop bars
Chipping Drum Ø:	495 mm with quick change blades
Drive:	High speed auxiliary drive via the truck engine (PTO)
RPM:	1300 - 1600 rpm
Drive Performance:	323 kW / 440 HP
Flywheel Ø:	1370 mm, 150 mm thick
Ejection:	Hydraulically foldable; Adjustable for height and rotatable; Hydraulic ejection flap adjustment
Controls:	Automatic load-dependent feed control; Rotation direction and speed of the conveyor belt and pressure roller infinitely variable, irrespective of one another and reversible; two day and one overall operating hours counters; Remote control with control panel for all functions
Chassis:	Mercedes- Benz ACTROS 3344 AK 6X6 Track width 1800 mm Tyres Rear Axle 315/80 R22.5 Tyres Front Axle 385/65 R22.5
Dimensions and weights incl. chassis	



All wood chipper functions and the loading crane can be operated safely and comfortably from the lorry cab.



By means of a camera mounted at the ejection point, the machine operator always has the chip material and the container levels in view.



Powerful truck wood chipper for the professional chipper!

Heizomat®

Woodchippers



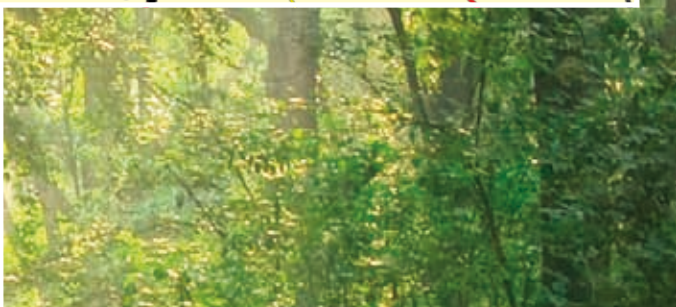
Factory Maicha



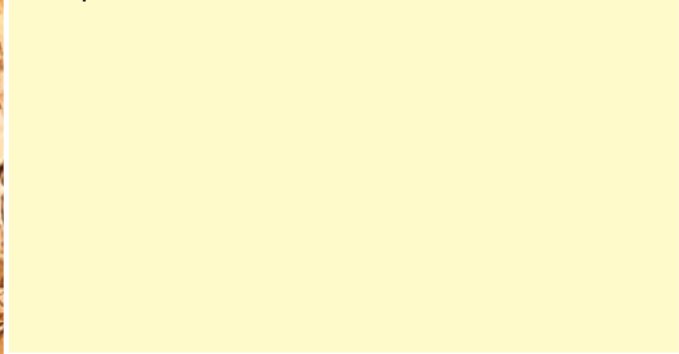
Factory Heidenheim



How to find us...



Our partner:



Heizomat Gerätebau- Energiesysteme GmbH
Maicha 21
91710 Gunzenhausen
Germany
Tel. +49 (0) 98 36 97 97 -0
Fax +49 (0) 98 36 97 97 -97

info@heizomat.de • www.heizomat.de



Technical changes reserved!